



September 2014

Limestone County 4-H "The Talk"

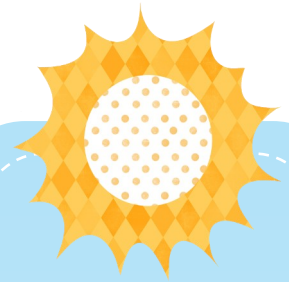
Welcome to the new 4-H year!

Save the Date!!! The **Fall 4-H Festival** is on **September 13** from **4:00 to 7:00 pm** at the Confederate Reunion Grounds State Historic Site. Please tell your friends about the festival and invite them to attend!

We will have fun activities, exhibits of 4-H project areas, archery demonstrations, and more. Hot dog meals will be provided to the first 200 youth who come and participate. There is also a concessions stand with a dollar menu for snacks and beverages.

Volunteers needed! 4-H members can sign up for one hour of booth time and in exchange for your hard work you will get one meeting credit. We also need plenty of adult helpers.

<u>Volunteer position</u>	<u>Number of volunteers per 1 HOUR shift</u>
• Scavenger Hunt	2 volunteers
• Friendship Bracelets	2 volunteers
• Hidden Items	1 volunteer
• Cotton activity station	2 volunteers
• Incredible Water Journey	1 volunteer
• Food Science in the Kitchen	1 volunteer
• Hot dog cook	1 adult volunteer
• Server	1 adult volunteer
• Registration desk	1 or 2 volunteers
• Floating helpers	3 volunteers



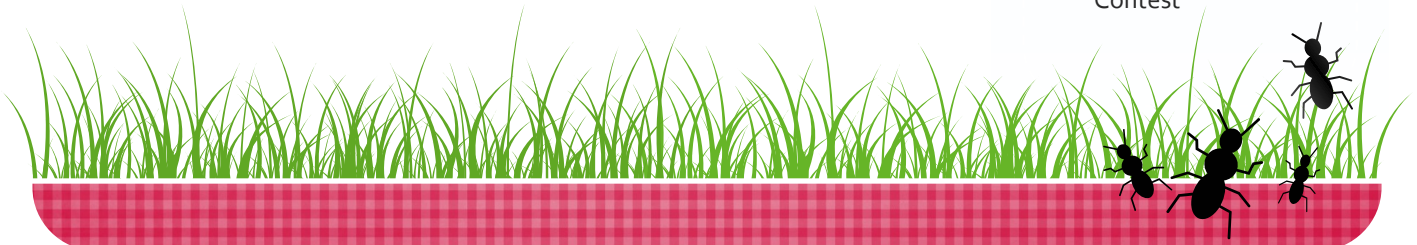
Important Dates

September

- 9/1 New 4-H year begins!
- 9/1 County Holiday—
Extension office closed
- 9/8 HOT fair entries due
- 9/12 Turkey orders due to
Ext. office (or by 9/13
to LCFA Board)
- 9/13 Fall 4-H Festival, 4:00–
7:00 pm
- 9/15 Major Show Swine tags
due
- 9/20 County Steer Valida-
tion, 8-11 am at the
Sale Barn
- 9/27-10/20 State Fair of
Texas, Dallas

October

- 9/27-10/20 State Fair of
Texas, Dallas
- 10/1-10/27 Registration open
for Postal League
- 10/3-12 Heart O' Texas Fair &
Rodeo, Waco
- 10/5 Texas 4-H Sunday
- 10/5-11 National 4-H Week
- 10/11 One Day 4-H
- 10/15 Last day to submit
photos online for 2014
Texas State Preserva-
tion Board Photo
Contest





4-H Club Meeting Schedule

Groesbeck 4-H Monday, Sept. 8, 6:00 pm, H.O. Whitehurst

Mexia 4-H Tuesday, Sept. 2, 6:30 pm, Gibbs Library

Kosse 4-H Monday, Sept 8, 6:30 pm, Kosse Community Center

Shooting Sports Some Mondays, 6:00 pm, County Show Barn
Sign up for texts: send @acc29 to 254-892-4870

Limestone Leaders Contact Lynn Parsons for schedule

Please remember—you have to join 4-H every year to stay a 4-H member! Be sure to fill out your green enrollment form and turn it in to your club manager or to Miss Wanda in the Extension office. The participation fee is only \$20 before November 1. October 30th at noon is the county deadline to have your green form & payment turned in to the Extension office for one step toward LCFA show eligibility.

Note: Clover Kids do not pay a participation fee—the fee only applies to bonafide 4-H members who are at least 8 years old and in the 3rd grade. Also, Clover Kids may not participate in shooting sports.



HOT Fair Entries due 9/8

The Heart O' Texas Fair is right around the corner in Waco and the livestock entry deadline is **September 8, 2014** at the Extension office.

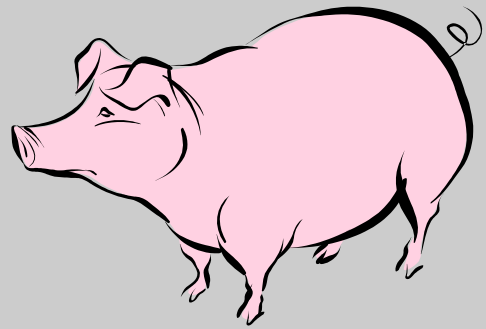
Don't miss out on this show and it's excellent scholarship program. Come see David or Wanda and sign up soon. They also have a calf scramble program—think about participating if you want some extra \$\$\$ for animal projects.

Major Show Swine Tag Orders Due

If you are interested in showing a market hog at any of the Texas Major Shows, then you must put in an order for a tag to the Extension office.

Tags cost \$10 each and are due by

September 15, 2014.



Livestock Judging Practice

We will hold our first practice of the year on **Monday, Sept. 22, 2014** at the Extension office.

We will go over our schedule for the fall. If you are interested in this project, come to the meeting and join the fun!



What Can You do in One Day?

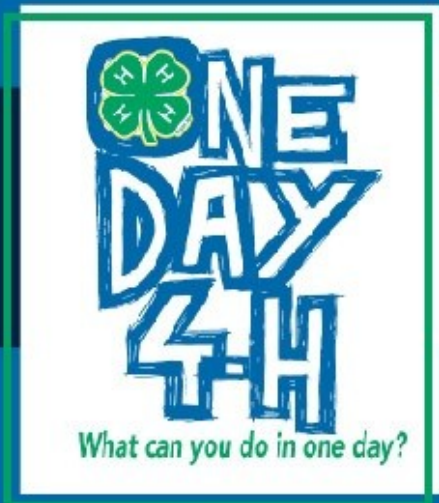


Calling all 4-H Members: Help make a difference
in your community in One Day!

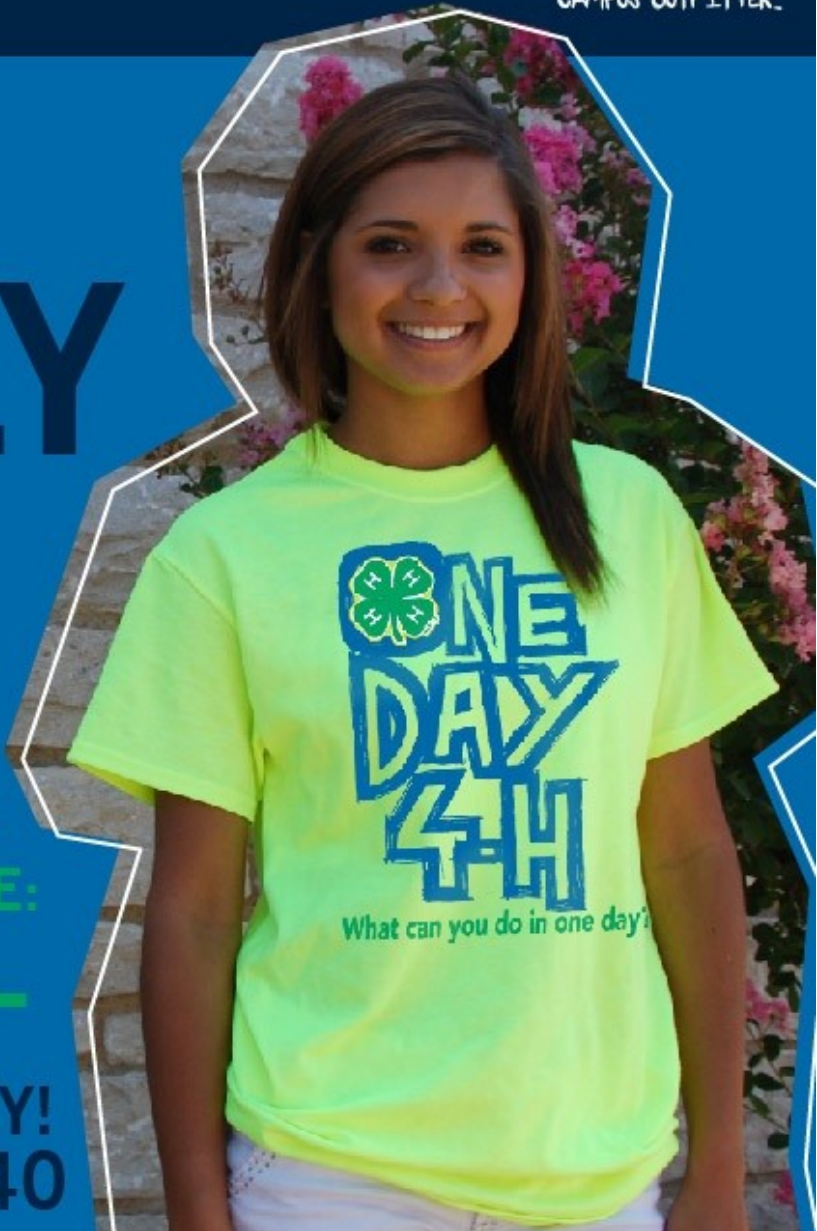
Every 4-H member in Texas is asked to take part in a **community service project**. You can pick a project as small as mowing the neighbors yard by yourself, to as large as your entire county 4-H coming together to host a 5K run for a local organization. One Day 4-H is your day to Make a Difference in your community!

Once your group has decided on its project, tell everyone about it! Sign up your project before September 26, 2014, so that Texas 4-H can promote it and recognize you. Visit <http://bit.ly/OneDay4H> to register.

Join One Day 4-H on Facebook at:
[facebook.com/OneDay4H](https://www.facebook.com/OneDay4H)



BAREFOOTAGRICULTURE.COM



**ONLY
\$4**

PLUS SHIPPING

**SIZES AVAILABLE:
YS - XXXL**

**CALL US TODAY!
888.261.0540**

You may place your orders now because the order time is shorter this year. The site will close at midnight on September 9, 2014. Visit <http://bit.ly/1vMrCY0> to order. No late orders will be accepted.

Sign up for text or email reminders

Enter this number

(469) 275-4941

With this message

@limec

OR



Limestone County Show Dates and Deadlines to Remember....

- 9/12/14 Turkey orders due to Extension office (or by 9/13 to LCFA Board)
- 9/20/14 County Steer Validation, 8-11 am at the Sale Barn
- 1/10/15 Registered heifers, 8-11 am at the County Show Barn
- 1/10/15 Pigs/Goats/Lambs, 8-11 am at the County Show Barn
- 3/6/15 LCFA Declaration of Projects due to Extension office
- 3/7/15 Rabbits and Horse Validation
- 3/25—3/28/15 County Show Dates

Remember:

By noon on **October 30th**, the 4-H green enrollment form & participation fee (\$20) must be turned in to the Extension office for one part of county show eligibility. 4-H participation fee also goes up after this date to \$25 for the year.

Don't forget to pick up your Limestone County Fair thank you lists, plaques, or checks at the Extension office!

**Limestone County
Extension Office**

PO Box 191
Groesbeck, TX 76642
Limestone Co.
Courthouse, G-14
(254) 729-5314 Office
(254) 729-2540 Fax
limestone-tx@tamu.edu

Vanessa Casad

County Extension Agent

Family & Consumer Sciences

Vanessa Casad

David W. Groschke

County Extension Agent

Agriculture/Natural Resources

David W. Groschke

Wanda Powell

Office Manager

wlpowell@ag.tamu.edu

Wanda Powell

Educational programs of the Texas A&M AgriLife Extension Service are open to all people without regard to race, color, religion, sex, national origin, age, disability, genetic information or veteran status. The Texas A&M University System, U.S. Department of Agriculture, and the County Commissioners Courts of Texas Cooperating.

