



## “The Talk”

AUGUST 2013

Twitter

[www.twitter.com/  
LimeCo4H](http://www.twitter.com/LimeCo4H)

Pinterest

[pinterest.com/limeco4h/](http://pinterest.com/limeco4h/)

Our own website

[limestone.agrilife.org](http://limestone.agrilife.org)

Facebook

[www.facebook.com/  
LimestoneCounty4H](http://www.facebook.com/LimestoneCounty4H)

### Camping

Summertime is the perfect time for 4-H Camp. We had 4-Hers participate in both the District 8 4-H Leadership Lab in Brownwood and the Southeast District 8 4-H County Camp in Palestine. Leadership Lab focuses on older 4-H members, 13-19, in order to teach leadership skills that can be brought back to Limestone County. Two 4-H members, Roy Ward and Rebecca Fisher, attended this year.



#### INSIDE THIS ISSUE:

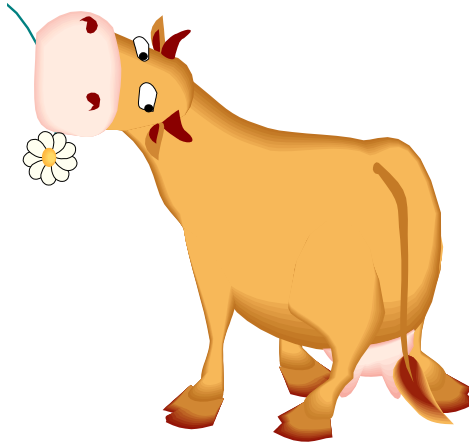
Facebook Opportunity	2
County Camp	2
Pen of 2 Validation	2
Learn by Doing Workshops	3
4-H Art Contest	3
Banquet & Rally	4
Dates	4

County Camp is planned and run by older 4-Hers as teen leaders and camp is open to youth from age 8 to 19. In addition to having a lot of fun, campers also learned things such as leadership, crafts, dance, recreation, water conservation, science, and more. See page two for a camp photo. Won't you join us next year?

## Upcoming Validation Deadline

Are you interested in being a guest editor for Limestone County 4-H's Facebook page? If so, contact Vanessa at the Extension office to apply.

We are looking for mature and responsible 4-Hers who want to talk about what they are learning and discovering in 4-H. Each 4-H editor will be responsible for a month during the 4-H year.



The Pen of 2 commercial heifer validation date is this week for the county show!

It's being held at the Sale Barn, on Saturday, August 3, 2013, from 8 am to 10 am. You must bring the project animals with you.



### 2013 Limestone County 4-H Campers

Front Row, l-r: Emily Contreras, Marisa McNutt, Maggie Devrow, Austin Fleming, Hunter Owens, J.D. McNutt, Colton Agnew, and Abigail Johnson.

Back Row, l-r: Agent Vanessa Casad, Jessie Ensminger, Colton Rich, Kendell King, Dusty Roberts, Jimmy Owens, Brendan Roark, and Agent David Groschke.



Three hands-on workshops are being offered for youth. Everyone who participates must be between 8 and 18 years old as of September 1, 2012.

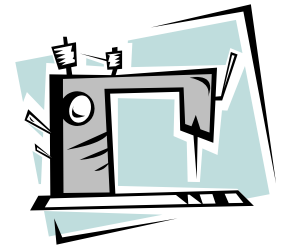
The **Food Challenge Boot Camp** on August 6 & 7, from 1:30—4:30 pm, covers basic cooking skills and teaches campers about the 4-H Food Challenge contest—think *Chopped* or *Iron Chef*. The two-day workshop is \$10 for 4-H members and \$20 for non-members. Price includes all supplies, including snacks, beverages, and mini-meal.



**Fashion Camp**, on August 8, from 1:30—4:30 pm, will be focused on creating a practice fashion storyboard and learning more about the 4-H fashion storyboard and fashion show competitions. Fashion camp is \$5 for 4-H members and \$15 for non-members. Price includes snacks and beverage.

**Just Added—Learn to Sew!** On August 20 & 21, at either 8:00—11:00 am OR 1:30 to 4:30 pm, come to the Extension office to learn basic sewing techniques.

Day One: we will learn all about sewing machines, how to use them, and work on a simple project. Day Two: all about patterns and fabrics. Cost is \$5 for 4-H members and \$15 for non-members. Price includes snacks and beverage. Bring your own sewing machine if you have one, and pick up a supply list when you register.



This is a great way to introduce a friend to 4-H—register & come have fun together! Call the Extension office to register, 729-5314.

### Calling all 4-H Artists! - Deadline Extended

New opportunity to show off your talents! Submit your drawings for the official 2013-2014 Limestone County 4-H Calendar. You can submit drawings that illustrate your 4-H projects and experiences. Drawings are:

- Due at the county office by **August 20, 2013**
- Must be on plain white paper measuring 8 1/2 by 11 inches
- The art work can be rendered in either color or black and white (pencil, marker, etc.) but please be sure that your drawing will copy clearly since most drawings will end up being printed in black & white

Drawings will be used for the cover (1<sup>st</sup> place winner) and to illustrate each month in our calendar. The calendar will be published electronically for all of our 4-H families to download and print. The first, second, and third place drawings will receive prizes at the 4-H Awards Banquet.

Multiple submissions are allowed. Get busy drawing—we would love to see a lot of participation in this contest. You don't have to be a Picasso—just share your 4-H experiences!!





2013

## 4-H Banquet & Rally Day

New & exciting changes are planned for this year's 4-H Banquet. We are incorporating a 4-H Rally Day into the banquet and plan to make a fun evening of it! The tentative date is August 23rd or 24th. Stay tuned for more details...



Don't forget to pick up your Limestone County Fair thank you lists, plaques, or checks at the Extension Office!



18 USC 707

### August

- 8/3—Pen of 2 validation at Sale Barn
- 8/6-7—Food Challenge Boot Camp (1:30-4:30 pm)
- 8/8—Fashion Camp (1:30-4:30 pm)
- 8/15—First day to sign-up for 4-H for the 2013/2014 year! See Wanda for a green form.
- 8/19—State Fair entries due to the Extension office
- 8/20—Art contest entries due
- 8/20-21—Learn to Sew Camp (8:00-11:00 am OR 1:30-4:30 pm)
- 8/23—Major show Lamb & Goat tag orders due to Extension office
- TBA—4-H Banquet & Rally Day

### September

- 9/1—New 4-H year begins
- 9/9—HOT Fair entries due to the Extension office

### October

- 10/19 Market Steer Validation for County Show
- 10/30—4-H membership application and participation fee due by **NOON** to the county office for county show eligibility

**PLEASE TAKE NOTE OF THE IMPORTANT LIVESTOCK SHOW DEADLINES ABOVE!**

**A CHANGE—HOT FAIR ENTRIES ARE NOW DUE ON SEPTEMBER 9TH.**

### Limestone County Extension Office

PO Box 191  
Groesbeck, TX 76642  
Limestone Co.  
Courthouse, G-14  
(254) 729-5314 Office  
(254) 729-2540 Fax  
limestone-tx@tamu.edu

**Vanessa Casad**  
County Extension Agent  
Family & Consumer Sciences  
vcasad@ag.tamu.edu

**David W. Groschke**  
County Extension Agent  
Agriculture/Natural Resources  
dwgroschke@ag.tamu.edu

**Wanda Powell**  
Office Manager  
wlpowell@ag.tamu.edu

*Vanessa Casad*     *David W. Groschke*

*Wanda Powell*

Educational programs of the Texas A&M AgriLife Extension Service are open to all people without regard to race, color, sex, disability, religion, age, or national origin. The Texas A&M University System, U.S. Department of Agriculture, and the County Commissioners Courts of Texas Cooperating.