



Limestone County 4-H “The Talk”



Volume 2, Issue 3

March 2016

Twitter

[www.twitter.com/
 LimeCo4H](http://www.twitter.com/LimeCo4H)

Pinterest

pinterest.com/limeco4h/

Our website

limestone.agrilife.org

Facebook

[https://www.facebook.com/
 LimestoneCountyExtension](https://www.facebook.com/LimestoneCountyExtension)



Inside the Issue:

4-H Meetings	1
LCFA—FCS	1
Rule Books	2
4-H Spotlight!	2
Tags	2
Upcoming Events	3
Happy Spring Break!	3

4-H Meetings!

Remember, members must be in good standing by attending at least **3 meetings or sanctioned events in their enrolled chapter**, prior to the 2016 Fair. Verification will be by official sign-in sheet. The 4-H members name must be on the sign-in sheet to be counted. The parents name will not count as verification that the child attended the meeting. You cannot get credit for meetings by attending another club’s meeting, it must be in the club that you joined.

There are only 2 meetings left before the 2016 Limestone County Fair

LCFA Family and Consumer Sciences Division

Entry Deadline is March 21, 2016 before 5:00pm

Please stop by the County Extension office for rules and entry forms!

Categories

Foods —Baked goods, Yeast breads, Pies, etc.

Food Preservation—Canned fruit, pickles, preserves, etc.

Arts and Crafts— Photography, Drawings, Crafts, etc.

Sewing— Home décor, Clothing, etc.

Junior Horticulture— Potted flowering plants



LCFA 2015—2016 Rule Books Pick-Up



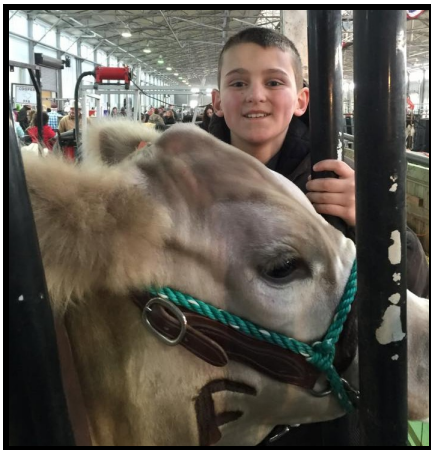
Please stop by the County Extension Office to pick up your Limestone County Fair Rule books for 2015—2016. You will need to sign for a copy of the rule book.

Only one book will be given per family.

4-H Spotlight!

★ Congratulations! ★

Congratulations to Bryce Rand on his 5th place class 5 Exotic steer at the Fort Worth Stock Show!



Tag Orders Due Soon!

Major Show Steer tags
&
State Fair Lamb and Goat tags

Orders will be due in April

Dates: TBA





Sunday
March 13, 2016



Sunday
March 27, 2016



Texas A&M AgriLife
Extension Service
200 West State St., G-14
P.O. Box 191
Groesbeck, TX 76642
Phone: (254) 729-5314
Fax: (254)729-2540



March

Entry deadline for the LCFA Family and Consumer Sciences Division is March 21st at 5:00pm

April

Clipping Days for the County Show April 7th—8th
- Call the Extension office for an appointment if you want your animal clipped

Coming Up:

Major show steer tag orders will be due in April

Date: TBA

State Fair lamb and goat tag orders due in April

Date: TBA



Limestone County Office



Wanda Powell
Office Manager
wlpowell@ag.tamu.edu
Wanda Powell



Gabrielle Washington
County Extension Agent
Family & Consumer Sciences
gabrielle.washington@ag.tamu.edu

Gabby Washington

David W. Groschke
County Extension Agent
Agriculture/Natural Resources
dwgroschke@ag.tamu.edu

David W. Groschke